

8kg Heat Pump Tumble Dryer - Instruction Manual Model: CK8508



To avoid risk of accidents or damage to the appliance, it is essential to read these instructions before it is installed and used for the first time.



Caterkwik Ltd

The Lakeland Catering Centre
Newlands
Ulverston
Cumbria
LA12 7QQ

01229 480001

info@caterkwik.co.uk

Contents

Safety Instructions

- Safety Instructions 2

Installation

- Product Description 9
- Installation 9

Operation

- Quick Start 12
- Before each Drying Cycle..... 13
- Control Panel 15
- Options..... 16
- Drying Programmes Table 19

Maintenance

- Cleaning and Care 21
- Trouble Shooting 24
- Technical Specifications 26
- Product Features..... 27

Safety Instructions

■ Safety Instructions



CAUTION: RISK OF FIRE

Warning!

To prevent any damages to your and others' life or property, you have to follow the safety notes.

Intended use

- This heat pump dryer is intended for drying of household laundry, which have been washed with water. It has been designed solely for private use and is not suitable for commercial or shared use.
- Use this appliance only as described in this user manual.
- This appliance is for indoor use only.
- Any other use is deemed improper and may result in damage to property or even personal injury.
- The manufacturer accepts no liability for damage caused by improper use.

Safety Instructions

- The appliance corresponds to protection class I and may only be connected to a plug with a protective conductor that has been installed properly. When connecting the appliance to the mains, make sure that the mains voltage is correct. You can find more information about this on the rating plate.

Safety Instructions

- The electrical safety of this tumble dryer can only be guaranteed when correctly earthed. It is essential that this standard safety requirement is met. If in any doubt, please have the household wiring system tested by a qualified electrician. The manufacturer cannot be held liable for the consequences of an inadequate earthing system (e.g. electric shock).

Warning

Electric shock hazard

- Before connecting the tumble dryer, ensure that the connection parameter on the rating plate (fuse rating, voltage and frequency) match the mains electricity supply. If in any doubt, consult a qualified electrician.
- The electrical safety of this tumble dryer can only be guaranteed when correctly earthed. It is essential that this standard safety requirement is met. If in any doubt, please have the household wiring system tested by a qualified electrician. The manufacturer cannot be held liable for the consequences of an inadequate earthing system (e.g. electric shock).
- Do not pull the power cord forcefully.
- Do not plug/draw the mains plug with wet hands.
- Do not bend, clamp or damage the power cord and the power plug.
- If the power cable is damaged, it must be replaced by the manufacturer, its service agent or similarly qualified persons in order to avoid a hazard.

Safety Instructions

- Warning: The appliance must not be supplied through an external switching device, such as a timer, or connected to a circuit that is regularly switched on and off by a utility.
- Do not connect the appliance to the mains electricity supply by an extension lead, multi-socket adapter or similar.
- The accessibility of the plug must always be ensured, in order to disconnect the tumble dryer from the mains.
- If the appliance appears to be an abnormally high temperature, please unplug immediately.

Injury danger

- The appliance must not be installed behind a lockable door, a sliding door or a door with a hinge on the opposite side to that of the tumble dryer, in such a way that a full opening of the tumble dryer door is restricted.
- Do not disassemble or install the dryer without any instruction or supervision.
- Do not stack this dryer on washing machine without stacking kits. (If you want to stack this dryer on a washing machine, please purchase the independent parts. Installation shall be done by the manufacturer, its service agent or similarly qualified persons to avoid any hazards).
- Do not lean on the opened door of the dryer.
- Condensed water is not drinking water. It can cause health problems in both people and animals if consumed.

Damage danger

- Do not exceed the stated maximum load. See the related chapter in the user manual.

Safety Instructions

- Do not operate the dryer without the door filter and base filter.
- Do not dry the clothes before being spun.
- Do not expose the dryer directly to the sun.
- Do not install the dryer in humid and drenching environment.
- During cleaning and maintenance, please remember to pull out the power plug and do not directly spray the dryer with water.
- The appliance should not be overturned during normal use or maintenance.



CAUTION: RISK OF FIRE

Explosion & Fire danger

- Please do not dry the clothes with any flammable substances such as kerosene or alcohol. Otherwise, there may be an explosion.
- The appliance contains an environmentally friendly but flammable R290 refrigerant. Keep away from open flames and other sources of ignition.
- The tumble dryer is not to be used if industrial chemicals have been used for cleaning.
- Do not dry unwashed items in the tumble dryer.
- Items that have been soiled with substances such as cooking oil, acetone, alcohol, petrol, kerosene, spot removers, turpentine, waxes and wax removers should be washed in hot water with an extra amount of detergent before being dried in the tumble dryer.

Safety Instructions

- Items such as foam rubber (latex foam), shower caps, waterproof textiles, rubber backed articles and clothes or pillows fitted with foam rubber pads should not be dried in the tumble dryer.
- Fabric softeners, or similar products, should be used as specified by the fabric softener instructions.
- Oil-affected items can ignite spontaneously, especially when exposed to heat sources such as in a tumble dryer. The items become warm, causing an oxidation reaction in the oil. Oxidation creates heat. If the heat cannot escape, the items can become hot enough to catch fire. Piling, stacking or storing oil-affected items can prevent heat from escaping and create a fire hazard.
- Remove all objects from pockets such as lighters and matches.
- If it is unavoidable that fabrics that contain vegetable or cooking oil or have been contaminated by hair care products be placed in a tumble dryer they should first be washed in hot water with extra detergent. This will reduce, but not eliminate, the hazard.
- **WARNING:** Never stop a tumble dryer before the end of the drying cycle unless all items are quickly removed and spread out so that the heat is dissipated.
- Openings must not be obstructed.
- The lint trap has to be cleaned frequently.
- Lint must not be allowed to accumulate around the tumble dryer.

Safety Instructions

Safety with children

- This appliance can be used by children aged from 8 years and above and persons with reduced physical, sensory or mental capabilities or lack of experience and knowledge if they have been given supervision or instruction concerning use of the appliance in a safe way and understand the hazards involved. Children shall not play with the appliance. Cleaning and user maintenance shall **not** be done by children without supervision.
- Children should be supervised to ensure that they do not play with the appliance.
- Children of less than 3 years should be kept away unless continuously supervised.
- Always close the door after use. In this way you will avoid the danger of:
 1. Children climbing onto or into the dryer or hiding things in it.
 2. Pets or other small animals climbing into it.

Safety Instructions

Correct Disposal of this product:



This marking indicates that this product should not be disposed with other household wastes throughout the EU. To prevent possible harm to the environment or human health from uncontrolled waste disposal, recycle it responsibly to promote the sustainable reuse of material resources. To return your used device, please use the return and collection systems or contact the retailer where the product was purchased. They can take this product for environmental safe recycling.

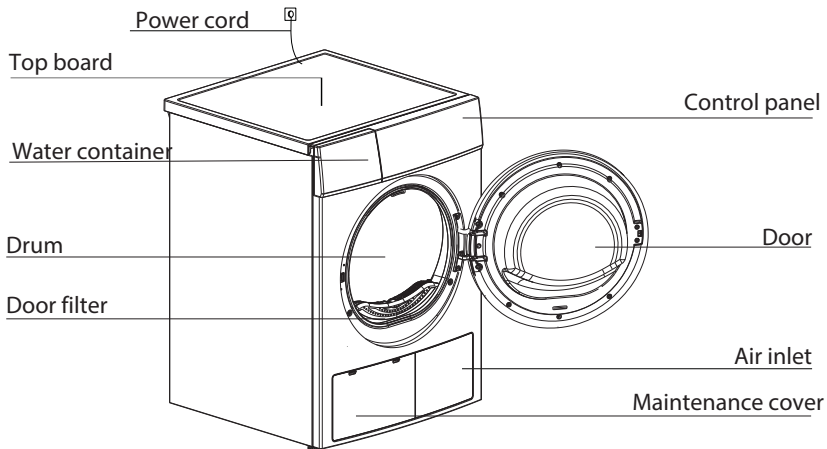
Disposal of packaging material

- The packaging is designed to protect the appliance from damage during transportation. The packaging materials are environmentally friendly and should be recycled. Recycling the packaging can reduce the use of raw materials in the manufacturing process and the amount of waste in landfill sites.

| Model | Rated capacity |
|--------|----------------|
| CK8508 | 8.0kg |

Installation

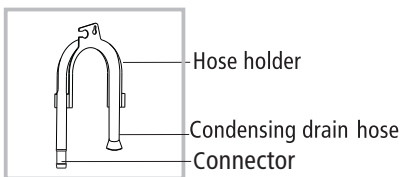
■ Product Description



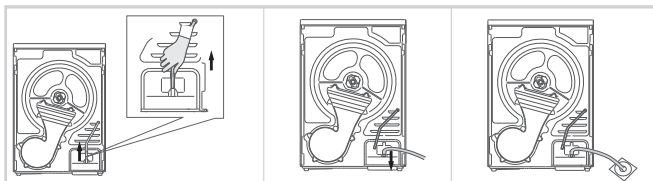
Note: The actual model you purchased might differ from the illustration

Accessories

The following parts are optional for specific models. If your dryer has following parts, please wear gloves to install them as per the instruction below .



■ Installation



Pull up the upper drain hose

Connect the external drain hose to the water pump

Put the external drain hose into the floor drain (be careful not to bend the external drain hose)

Installation

Transport

Move cautiously. Do not grasp any salient parts of machine. The machine door cannot be used as the handle for transport. If the dryer can't be transported erectly, the dryer can be tilted to right less than 30°.

Risk of injury and damage.

Improper handling of the appliance may result in injury.

- The appliance is very heavy. Never transport or carry the appliance alone; always with the assistance of another person.
- Remove all obstacles on the transport route and from the installation location, e.g. open doors and clear away objects lying on the floor.
- Do not use the open door as a handle.
- Remove all package material before using the appliance.
- Before setting up the tumble dryer, check it for any externally visible damage. Do not install or use a damaged tumble dryer.
- Do not install the tumble dryer in a room where there is a risk of frost occurring. At temperatures around freezing point the tumble dryer may not be able to operate properly. There is a risk of damage if the condensed water is allowed to freeze in the pump and hoses.

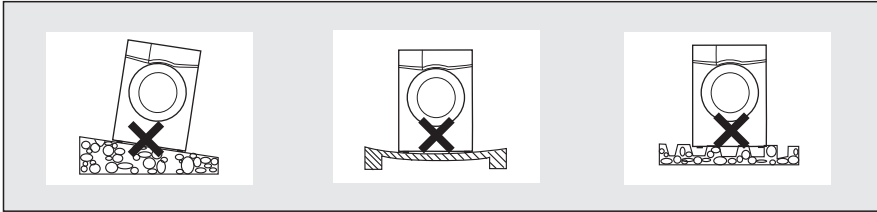
Installation Position

Warning

- Children can become entangled in the packaging film or swallow small parts and suffocate. Do not allow children to play with the packaging.
 - The appliance must not be installed behind a lockable door, a sliding door or a door with a hinge on the opposite side to that of the tumble dryer, in such a way that a full opening of the tumble dryer door is restricted.
 - Do not restrict the floor clearance through deep pile carpets, strips of wood or similar. This might cause heat built-up which would interfere with the operation of the appliance.
1. It is recommended that, for your convenience, the machine is positioned close to your washing machine.
 2. Do not stack this dryer on washing machine without stacking kits. (If you want to stack this dryer on a washing machine, please purchase the independent parts. Installation shall be done by the manufacturer, its service agent or similarly qualified persons to avoid any hazards).
 3. The tumble dryer must be installed in a clean place, where dirt does not accumulate. Air must be able to circulate freely around the appliance. Do not obstruct the front air inlet or the air intake grilles at the back of the machine.

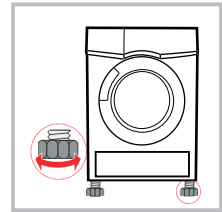
Installation

4. To keep vibration and noise within minimum level when the dryer is in use, it must be placed on a firm and level surface.
5. The feet must never be removed.



Level Adjustment

Once in its permanent operating position, check that the dryer is absolutely level with the aid of a spirit level. If it is not, adjust the feet by hand or using a tool.



Power Supply Connection

1. Make sure that the voltage of the power supply is the same as the electric specification.
2. Do not connect the dryer with the power connection board, a universal plug or socket, do not use multi-plug adapters and extension cables.

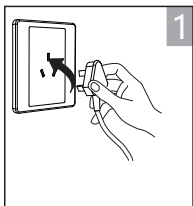
Operation

■ Quick Start

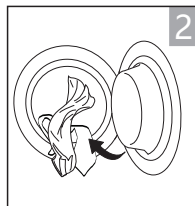
Note!

Before using, make sure the tumble dryer is installed correctly.

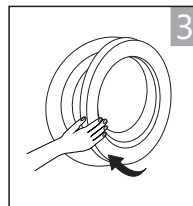
Before Drying



plug in



load



close the door

Drying



on



select program



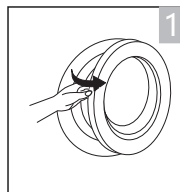
select function
or default



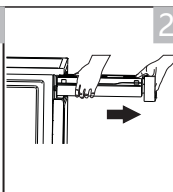
start

After Drying

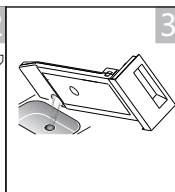
Buzzer beep and "0:00" on display.



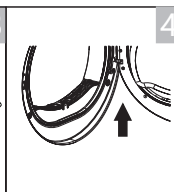
open the door and
take out laundry



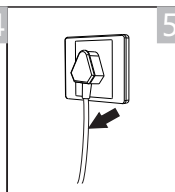
pull out the
container



pour out
condensate water



clean the filter



power off

Note

- If the socket with a switch is used, please press the switch to turn off the power directly.

Operation

■ Before Each Drying












Note

- Leave it to stand for 2 hours after transporting. Before first use, please use the soft fabric to clean the inside drum.
 - 1.Put some clean rags into the drum.
 - 2.Plug the power, press 【On/Off】 .
 - 3.Select the 【Refresh】 Programme, press 【Start/Pause】 button.
 - 4.After finishing this programme, please follow the “cleaning and care ” (refer to page 21) to clean the filter door.
- During drying, the compressor and the water will generate some noise which is entirely normal.

- 1.Before drying, thoroughly spin the laundry in washing machine. High spin speed shortens the drying time and saves energy.
- 2.For uniform drying result, sort the laundry according to fabric type and select the appropriate drying programme.
- 3.Before drying, please close zips, hooks and eyelets, buttons, tie fabric belts, etc.
- 4.Remove all objects from pockets such as lighters and matches.
- 5.Sew in or remove underwiring from bras.
- 6.Close duvet covers and pillow cases to prevent small items from being rolled up inside them.
- 7.Leave jackets open and undo any long zips so that textiles dry evenly.
- 8.Do not over dry the clothes, because over dried clothes can easily get creases.
- 9.Do not dry the articles containing rubber or similar elastic materials.
10. Keep the area around the tumble dryer clean. Coal dust or flour may cause an explosion.
11. The door shall be opened only after the programme of the tumble dryer is finished to avoid being scalded by hot steam or over heated drying machine.
12. Clean the lint filter and empty water container after each use to avoid extension of drying time and increase of energy consumption.
13. Do not dry clothes after dry-clean process.

Operation

The reference weight of dry clothes (weight per item)

| | | | |
|---|---|--|---|
|  Sweater (mixed 800g) |  Jacket (cotton 800g) |  Jeans (800g) |  Bath Towel (cotton 900g) |
|  Single bedsheet (cotton 600g) |  Work clothes (1120g) |  Pyjamas (200g) |  Shirt (cotton 300g) |
|  T-Shirt (cotton 180g) |  Underwear (cotton 70g) |  Socks (mixed-weave 50g) | |

Note

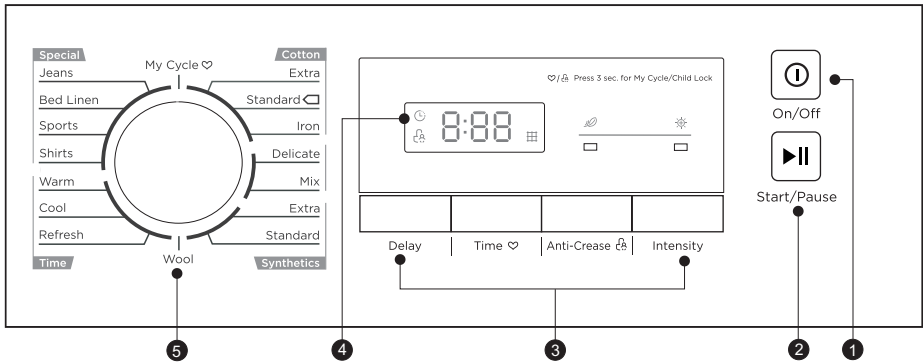
- Do not exceed the stated maximum load.
- Do not dry dripping wet laundry. The dryer might get damaged.

Only dry laundry suitable for tumble drying. Check the laundry care labels:

- Suitable for tumble drying
- Normal drying process: Drying in the tumbler is possible under normal load and temperature 80°.
- Mild drying process: Caution is appropriate when tumble drying. Select mild process with reduced thermal action.
- Do not tumble dry: Articles unsuitable for drying in the tumbler.

Operation

■ Control Panel



1 On/Off

Product is switched on or off.

2 Start/Pause

Press the button to start or pause the drying cycle.

3 Option

These buttons are used for setting additional functions.

4 Display

The display shows the setting, estimated program time remaining and status messages of your dryer.

5 Programmes

Different drying cycles can be selected according to the users need and the type of laundry to be dried.

Operation

■ Option

Delay

Delay

This function is used for delaying the start of the drying programme up to 24 hours. When the delayed programme starts, the time starts to countdown on the display and the delay icon blinks.

1. Load your laundry and make sure the machine door is closed.
2. Press the **【On/Off】** button, then use the programme selector knob to select the desired programme.
3. You can additionally select the **【Anti-Crease】** or **【Signal】** functions according to your need.
4. Press the **【Delay】** button.
5. Repeatedly press the **【Delay】** button to select the desired delay time.
6. After the **【Start/Pause】** button is pressed, the Dryer is at the running condition. The drying procedure will be automatically performed when the delay time is over.
7. If you press the **【Start/Pause】** button again, the delay function will be paused.
8. If you want to cancel the "Delay" function, please press the **【On/Off】** button.

Time

Time

When the **【Time】** programme is selected, the **【Time】** button can be used to adjust the drying time in 10 min. steps.

Intensity

Intensity

You can adjust the dryness level of the laundry by pressing the **【Intensity】** button. There are four grades.

1. The intensity function can be activated only before the programme starts.
2. Press the **【Intensity】** button repeatedly to increase the drying grade.
3. Except the **【Cotton Iron】**, **【Delicate】**, **【Wool】**, **【Time】** programme, all the other programmes can be adjusted with the **【Intensity】** function.

Operation

Anti-Crease

Anti-Crease

At the end of the drying cycle, the anti-crease time is 30 minutes (default) or 120 minutes (selected). This function prevents the laundry from creases. The laundry can be removed during the anti-crease phase. Except **【Cool】** , **【Wool】** and **【Refresh】** , all the other programmes have this function.

My Cycle

My Cycle

Used to define and save your favourite programme, which is used frequently.

1. Select the desired programme and other drying functions.
 2. Press and hold the **【Time】** for 3 seconds until the beep sounds and the desired programme has been saved.
 3. Turn the programme selector to the **【My Cycle】** position, then you can start your favourite programme. If you want to change the **【My Cycle】** settings, repeat the steps (1) and (2).
-

Child Lock

Child Lock

1. This machine incorporates a special child safety lock, which can prevent children from carelessly pressing buttons or making the faulty operation.
 2. When the drying cycle is running, press the **【Anti-Crease】** button at the same time for 3 seconds to start child lock function.
 3. When child lock function is set, the display will show Child lock icon and all button are deactivated, except **【On/Off】** button.
 4. To deactivate the child lock function, the **【Anti-Crease】** button shall be pressed at the same time for 3 seconds.
-

■ Display



Delay



Child lock



Remaining Time indicator/Error message



Clean filters (warning)



Anti-crease



Intensity



My Cycle

Operation

■ Programmes

Programme selector

1. When the LED display screen lights up, rotate the control knob to select the desired programme.
2. Select the **【Delay】** , **【Time】** , **【Intensity】** , **【Anti-Crease】** functions for additional options.
3. Press the **【Start/Pause】** button.
4. Press the **【On/Off】** button after the programme has completed.

Programme start

The drum will rotate after the programme starts. The cycle phase LED in the display will light up and the remaining programme time will be displayed.

Programme end

1. The drum will stop rotating after the programme ends. The display will show "0:00", also the cycle phase LED showing "End" and related LED will illuminate. The dryer will start **【Anti-Crease】** function if user doesn't remove the load. (Refer to page 17). Please press **【On/Off】** button after unloading the tumble dryer to cut off power and pull out the plug.
2. Deal with the problems according to "Trouble Shooting" section, if there is an unexpected stop during the drying procedure or the dryer shows an Error Code (Refer to page 24).

Operation

■ Drying Programmes Table

| Programme | | Max Load | Application/Properties | Delay | Time |
|------------|---------------|----------|---|-------|------|
| Cotton | Extra | 8.0kg | For single or multi-layer cotton laundry to be dried completely for direct storage. | Y | N |
| | Standard ☐ | | | | |
| | Iron | | For single layer cotton laundry to remain damp for ironing. | | |
| Delicate | | 1.0kg | For delicate laundry that is suitable for drying or laundry that must be hand washed at low temperature. | Y | N |
| Mix | | 3.5kg | For mixed fabrics from cotton and synthetics. | Y | N |
| Synthetics | Extra | 3.5kg | For thick or multi-layer synthetic fabrics to be dried completely . | Y | N |
| | Standard | | To dry thin synthetic textiles, which are not ironed, such as easy care shirts, baby cloths or socks. | | |
| Wool | | 1.0kg | To refresh you wool items and make them more fresh and fluffy. | Y | N |
| Special | Jeans | 4.0kg | To dry jeans or leisure clothes that are spun at high speed in the washing machine. | Y | N |
| | Bed Linen | 4.0kg | To dry bed linen, bed sheets or other large items. | | |
| | Sports | 3.0kg | To dry sportswear and thin fabrics from polyester, which are not ironed. | | |
| | Shirts | 1.0kg | For easy care laundry, such as shirts and blouses equipped with anti-crease functionality to minimize the ironing effort. Place clothes loosely in the dryer. Once dried, remove quickly and hang it on a clothes hanger. | | |
| My Cycle | | — | Define and save your favourite programme. | Y | — |
| Time | Warm | — | To dry individual items or complete the drying process of multi-layer fabrics with different drying behavior, such as jackets, pillows or voluminous items. Min 10 min. to max. 120 min.(in 10 min.steps) | Y | Y |
| | Cool | — | To air items without heating. Min. 10 min to max. 30 min.(in 10 min. steps) | | |
| | Refresh | 1.0kg | To refresh clothes kept in a closed environment for a long time or to remove odors. Min. 20 min to max. 150 min.(in 10 min. steps) | | |

- Note for Test Institutes:

- ☐ Test programme in accordance with Regulation 392/2012/EU for energy labelling, measured in accordance with EN 61121 and suitable for drying normal cotton load at rated load capacity.

Operation

■ Consumption Data ①

| Model | Program | Capacity | Spin Speed / Residual Humidity | Drying Time | Energy Consumption |
|--------|--------------------|----------|--------------------------------|-------------|--------------------|
| CK8508 | Cotton Standard | 8kg | 1000rpm / 60% | 175min | 1.90kWh |
| | Cotton Standard | 4kg | 1000rpm / 60% | 105min | 1.10kWh |
| | Synthetic Standard | 3.5kg | 800rpm / 40% | 60min | 0.60kWh |

Note!

- Thick or multi-layered fabrics, e.g. jackets etc., are not easy to dry. Choose Cotton Extra programme or use "Intensity" function.
- As uneven material, thick and multi-layered clothes are not easy to dry, it is better to choose the appropriate time drying programme to completely dry them if some parts of the clothes are still damp after programme finishes.

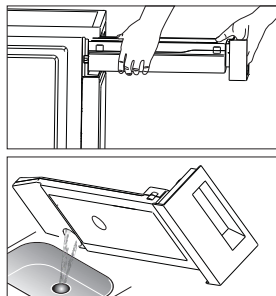
① All data are measured in accordance with EN 61121.

The actual consumption may differ from the values given in the table, depending on the amount of the laundry, type of fabric, residual moisture and any additional functions selected.


Maintenance

■ Cleaning and Emptying the water container

1. Pull out and hold the water container with two hands.
2. Tilt the water container, pour out the condensate water into a basin.
3. Reinstall the water container.



⚠ Warning

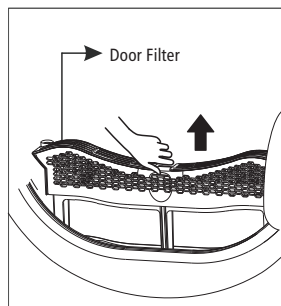
- Empty the water container after each use. Once the water container is filled completely, the programme will be paused and the  icon will light up. After the container is emptied, the dryer can be restarted by pressing **【Start/Pause】** button.
- Do not drink the condensate water.
- Do not use the dryer without the water container.

Clean the filters

This dryer has a primary door lint filter and a base filter in front of the heat exchanger for additional protection. Make sure you clean the door filter after each cycle. The base filter needs to be cleaned after five drying programmes.

Clean the door filter

1. Open the door.
2. Take out the door filter.
3. Open the filter and remove the fluff on the filter, you can clean it in running water.
4. Dry the door filter thoroughly before installing it back.



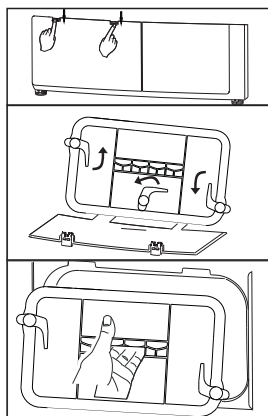
📌 Note

- Take notice of the correct orientation before inserting the door filter.

Maintenance

Clean the base filter

1. Open the cover.
2. Unlock three locking levers and grasp the filter handle.
3. Remove the base filter and clean it.
If there is too much lint on the filter, clean it in water. Dry the filter thoroughly before reinstalling.
4. Clean the rubber seal, both at the filter and handle.
5. Re-insert the filter.
6. Lock three locking levers and make sure that the levers are in correct lock position.
7. Close the cover until you hear a click sound.



Note

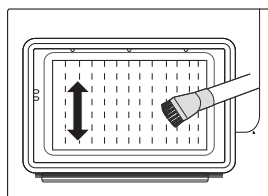
- The fluff accumulated on the filter will block the air circulation. Not cleaning the filter regularly will increase drying time and energy consumption.
- Disconnect the power cord before cleaning!
- Do not operate the dryer without the filter!
- Clean the base filter after five cycles to prevent fluff accumulation inside the dryer.

Clean the heat exchanger

Warning

Do not touch the heat exchanger with your hand, this may cause an injury.

- As necessary, approx. once every 6 months, remove the fluff from the heat exchanger using a vacuum cleaner with a dusting brush attached.
Clean the heat exchanger without applying any pressure. Otherwise the it may be damaged. The dryer will not dry if the cooling fins are damaged or bent.

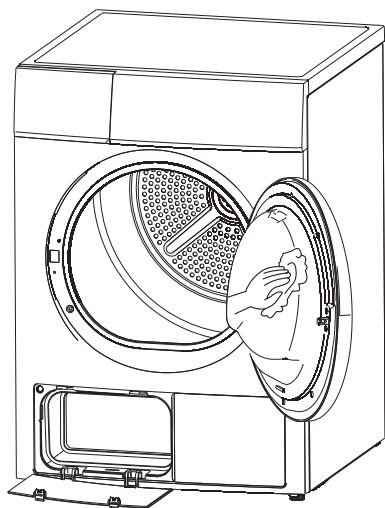


Maintenance

Clean Tumble dryer

⚠ Warning

- Disconnect the power cord before cleaning!
- Clean the dryer with a wet cloth which is only dampened by clean water.
- Do not use solvents, abrasive cleaners, glass cleaners or all-purpose cleaners. These could damage plastic surfaces and other parts.
- Please wear gloves when cleaning.



- Prepare a wet cloth dampened by clean water.
- Clean the door, especially the inside window.
- Clean the seal around the door opening.
- Clean the humidity sensor inside the drum.
- Take out all the filters, clean the seal and air flow openings.
- Before starting the dryer, dry all parts with a soft cloth.

Maintenance

■ Trouble Shooting

Many malfunctions and faults that might occur in daily operation can be easily remedied. Time and money will be saved because a service call won't be needed. The following guide may help you to find the reason for a malfunction and correct it.

| Display | Reason | Solutions |
|---------|--------------------------|---|
| "E32" | Humidity sensor error | Please contact your local service center if the problem occurs. |
| "E33" | Temperature sensor error | |
| "E82" | Communication error | |


Warning

- Only authorised technicians can carry out repairs.
- If the LED displays other prompt and the dryer does not work, please call the service.

Note

Before you call the service, please check if you have dealt with the problems yourself consulting the user instructions.

Maintenance

| Problem | Solution |
|---|---|
| <ul style="list-style-type: none">• Display is not on | <ul style="list-style-type: none">• Check if the power supply works.• Check if the mains plug is inserted.• Check the selected programme .• Press the 【On/Off】 button. |
| <ul style="list-style-type: none">• “Ful” is lighting | <ul style="list-style-type: none">• Check the water container. If it's full, please pour out the condensate water and restart the dryer.• If the container is not full, please restart the dryer directly.• If the “ful” icon is still lighting after you have finished the first two steps, please call the service. |
| <ul style="list-style-type: none">• “” is lighting | <ul style="list-style-type: none">• Clean the lint filter. |
| <ul style="list-style-type: none">• Dryer does not start | <ul style="list-style-type: none">• Connect the tumble dryer to the mains.• Turn on the tumble dryer.• Check the the door is closed.• Check the programme is set.• Press the 【Start/Pause】 button. |
| <ul style="list-style-type: none">• Degree of dryness was not reached or drying time too long | <ul style="list-style-type: none">• Clean lint filter and heat exchanger.• Empty the water container.• Check the drain hose.• Check installation place is appropriate.• Keep the air inlet clean.• Use higher drying intensity level programme or time programme. |
| <ul style="list-style-type: none">• There are humming noises | <ul style="list-style-type: none">• The compressor is operating. These noises are quite normal and do not indicate a fault. |
| <ul style="list-style-type: none">• The dryer switches off at the end of the programme | <ul style="list-style-type: none">• The dryer switches off automatically for energy saving. This is not an error but a normal function. |

Warning

If you cannot deal with the problems by yourself and need help:

- Press the **【On/Off】** button.
- Pull out the mains plug and call the service.

Maintenance

■ Technical Specifications

| Parameter \ Model | CK8508 |
|-------------------------|-----------------|
| Dimension(L*W*H) | 650*595*845(mm) |
| Ambient temperature | +5°C ~ +35°C |
| Rated input power | 800W |
| Rated voltage | 220-240V~ |
| Rated frequency | 50Hz |
| Refrigerant | R290 |
| Weight of product | 49kg |
| Rated capacity | 8.0kg |
| GWP | 3 |
| CO ₂ - eq | 0.00T |
| Quantity of refrigerant | 150g |

Contains fluorinated greenhouse gases covered by the Kyoto Protocol.
Hermetically sealed.

Note

- The rated capacity is the maximum capacity to be dried at one time. Make sure that the dry clothes which are loaded into the appliance do not exceed the rated capacity.
- Do not install the tumble dryer in a room when there is a risk of frost occurring. At temperatures around freezing point the tumble dryer may not be able to operate properly.
- There is a risk of damage if the condensate water is allowed to freeze in the pump, hoses and / or condensate water container.

Maintenance

■ Product Features

| | |
|---|------------------------|
| Model | CK8508 |
| Rated Capacity | 8.0kg |
| Dryer Type | Condenser |
| Energy efficiency class | A++ |
| Weighted annual energy consumption (AE _c) | 1 234.2kWh/year |
| Automatic or non-automatic | Automatic |
| EU Ecolabel | N/A |
| Energy consumption of the standard cotton programme | |
| Weighted energy consumption of the standard cotton programme at full and partial load | 1.44kWh |
| Energy consumption of the standard cotton programme at full load | 1.90kWh |
| Energy consumption of the standard cotton programme at partial load | 1.10kWh |
| Power consumption of the off-mode (Po) | 0.4W |
| Power consumption of the left-on mode (Pl) | 0.8 W |
| Duration of the left-on mode | 10 min |
| Programme time of the 'standard cotton programme' | |
| Weighted programme time of the standard cotton programme at full and partial load | 135min |
| Programme time of the standard cotton programme at full load | 175min |
| Programme time of the standard cotton programme at partial load | 105min |
| Condensation efficiency class A (most efficient) to G (least efficient) | |
| Average condensation efficiency of the standard cotton programme at full load | 81% |
| Average condensation efficiency of the standard cotton programme at partial load | 81% |
| Weighted condensation efficiency for the standard cotton programme at full and partial load | 81% |
| Sound power level for the standard cotton programme at full load | 69dB |

Remarks:

- 1** Energy consumption per year, based on 160 drying cycles of the standard cotton programme at full and partial load, and the consumption of the low-power modes. Actual energy consumption per cycle will depend on how the appliance is used. The programme 'Cotton Standard' used at full and partial load is the standard drying programme to which the information in the label and the fiche relates. This programme is suitable for drying normal wet cotton laundry and it is the most efficient programme in terms of energy consumption for cotton.